

Richmond DPU: City Improvement Projects

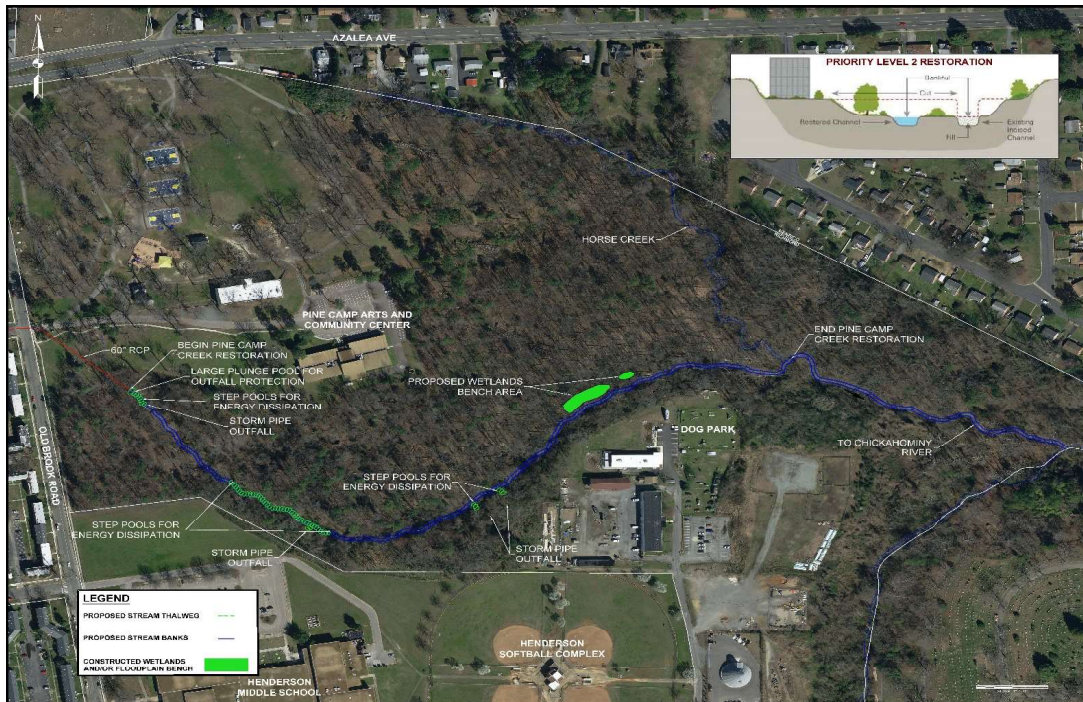
Job: Pine Camp Safety Project and Stream Rehabilitation

Location: Pine Camp Cultural Arts and Community Center

Project Introduction

The stream at Pine Camp Cultural Arts and Community Center is suffering from severely degraded and unsafe streambanks. The stream is entirely on City property, and is adjacent to Thomas H. Henderson Middle School, the Henderson Softball Complex, the Northside Dog Park, and John Marshall High School. As such, the wooded stream corridor is utilized by many students and citizens for environmental, educational, and recreational purposes within the surrounding community.

In partnership with the Department of Parks, Recreation, and Community Facilities this project seeks to ensure a safe and stable environment that prevents further erosion, and provides a healthier habitat for wildlife, native plants, and the community alongside new recreational and educational opportunities.



Project Schedule

Project Assignment: October 2019 (A. Morton Thomas & Associates)

Survey & Preliminary Design: Completed November 2020

Engineering Design: Design Completion Anticipated Late 2021

Construction Assignment: Construction Anticipated Fall and Winter 2022 (Estimated Length: 8 Months)



Learn more at RVAH2O.org



CITY OF RICHMOND
DEPARTMENT OF PUBLIC UTILITIES



WHAT HAPPENS NEXT:

Field Investigations:

Surveying, engineering, and environmental staff from A. Morton Thomas and Associates, Inc. have made site visits to investigate the erosion problems and related concerns. Those investigations will continue during the engineering design and environmental permitting phases of the project.

Public Meetings:

Public meetings may be held to present the proposed improvements and to receive feedback. The times and locations of these public meetings will be announced as the project progresses.

Project Duration:

The design is anticipated to be complete in late 2021, with permitting, bidding, and construction following in 2022.

Stormwater Local Assistance Fund:

This project has received state funding support from the Stormwater Local Assistance Fund (SLAF) administered by the Department of Environmental Quality (DEQ), which will provide an estimated 50% reimbursement of the project cost.

Project Benefits:

This \$3.33 million project seeks to stabilize and restore 2,220 linear feet of degraded stream channel to improve safety. Supplemental goals include increased recreational and educational opportunities, decreased flooding risk, and improved habitat within the Pine Camp Cultural Arts and Community Center community.



DAMAGED 60" PIPE OUTFALL



SEVERELY ERODED STREAMBANK

For questions, comments, or concerns specifically about any of these projects, please contact:

Name: Bill Boston

Title: Capital Improvement Program Manager

Company: Department of Public Utilities - Stormwater Utility

Phone: 804.646.8161

Email: william.boston2@rva.gov



Learn more at RVAH2O.org



CITY OF RICHMOND
DEPARTMENT OF PUBLIC UTILITIES

