

**Welcome!**



# Bryan Park Dam Removals and Stream Restoration Project 60% Design Update

April 14, 2026



**Hazen**

waterstreetstudio

**Why We're Here**

## REGULATORY DRIVERS

- Both dams lack sufficient hydraulic capacity to safely pass minor storms (1-inch of rainfall) and do not meet spillway design flood requirements
- The Lower Dam is out of compliance with Department of Conservation and Recreation (DCR) Dam Safety Program regulations due to its structural condition and insufficient hydraulic capacity
- Removal of both dams fully eliminates dam safety risks and resolves regulatory noncompliance



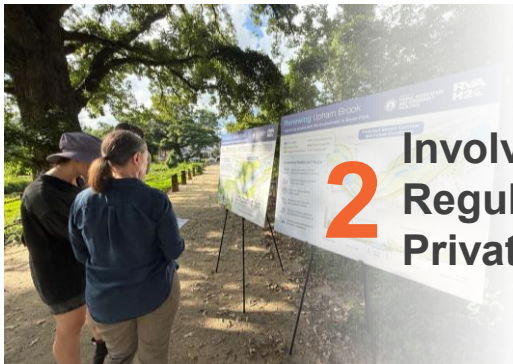
## VIRGINIA DAM SAFETY PROGRAM REGULATORY COMPLIANCE



**1** Meet Virginia Department of Conservation and Recreation Dam Safety Regulations



**4** Minimize Temporary and Permanent Impacts to Bryan Park and the Surrounding Area



**2** Involve and Coordinate with Regulatory Agencies and All Private and Public Stakeholders



**5** Improve the Ecosystem and Environment of Bryan Park



**3** Develop Solutions Consistent with the Character of Bryan Park



**6** Explore Cost-Effectiveness and Grant Funding Eligibility

## PROJECT GOALS

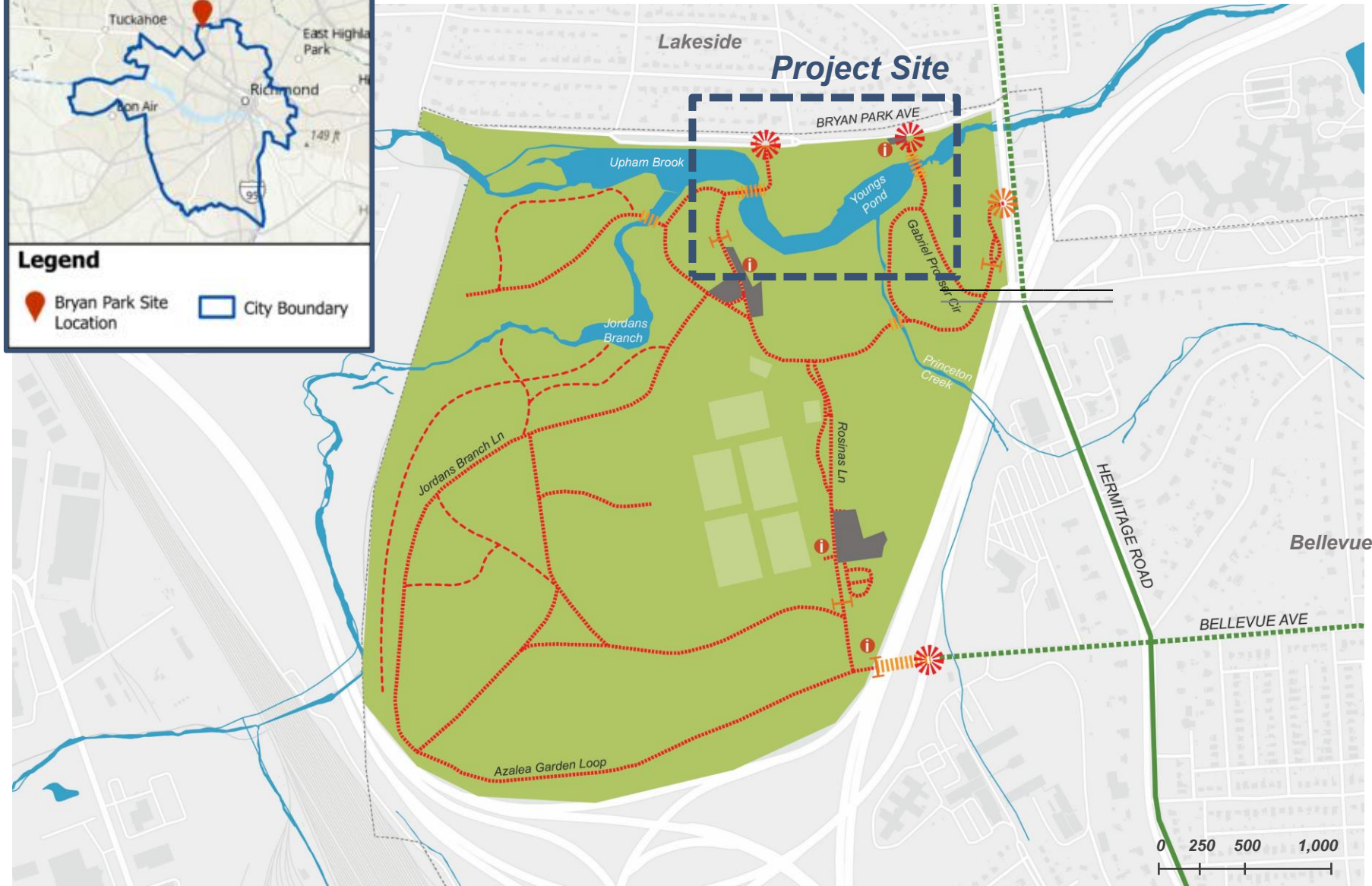
# Why We're Here at Pine Camp

Recently completed stream restoration partner project between the City of Richmond Parks, Recreation and Community Facilities and Department of Public Utilities



## PINE CAMP SAFETY PROJECT AND STREAM REHABILITATION

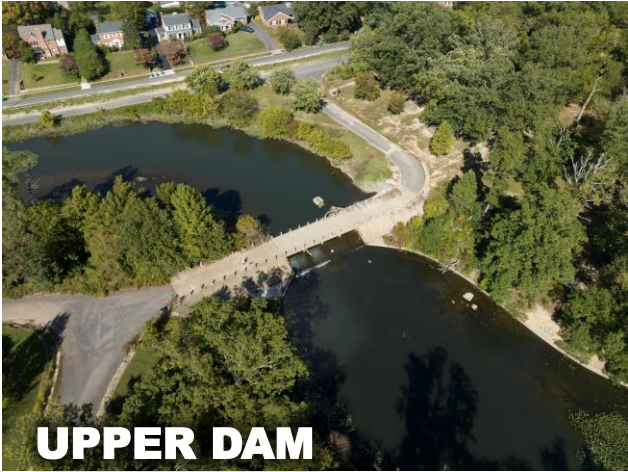
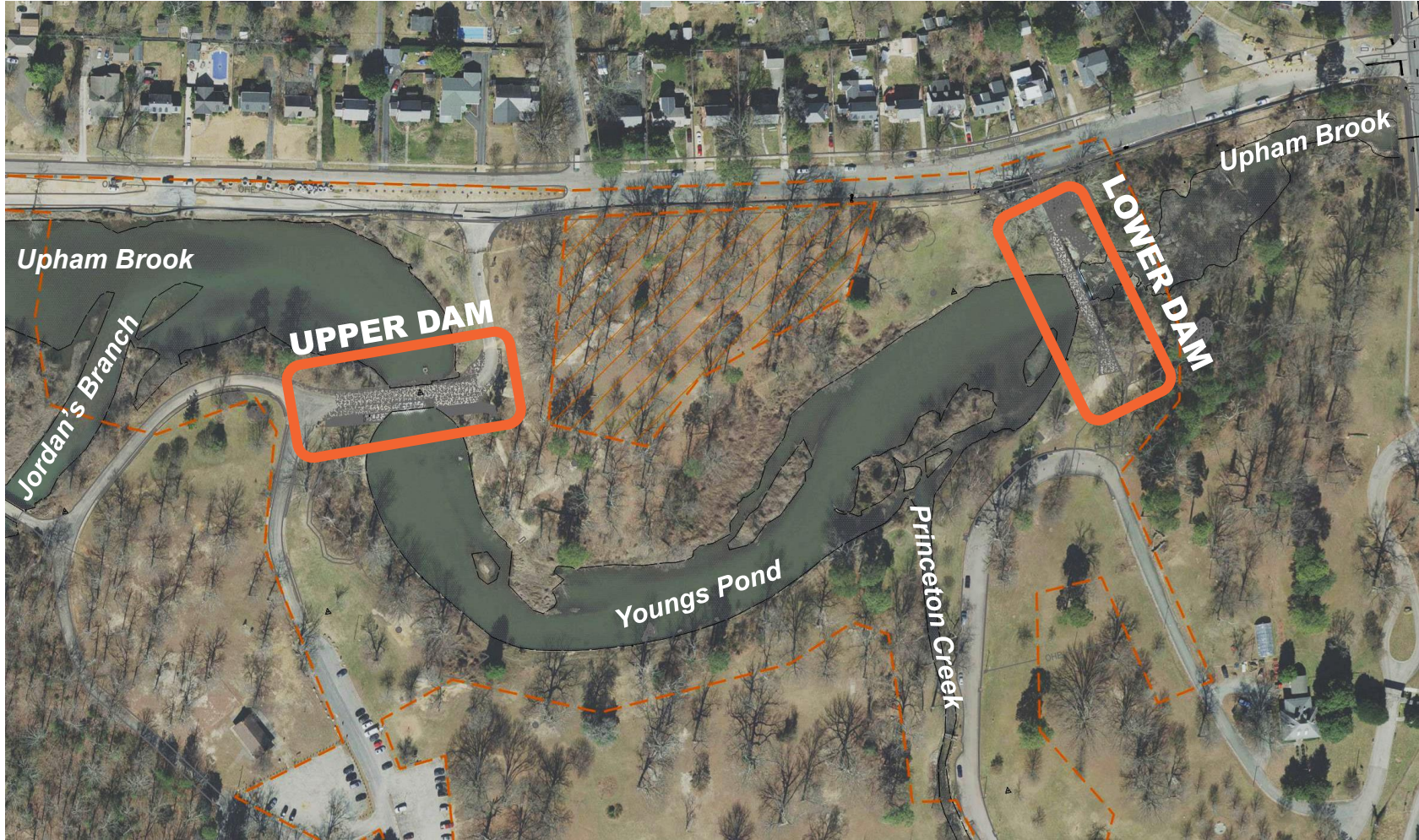
# Current Conditions



### Legend

- Dedicated Bike Lane
- - - Bike-friendly Road
- ✶ Vehicle Entrance
- ✶ Bike and Pedestrian Entrance
- - - - - Shared Park Roads
- - - Designated Park Trails
- H Access Gate
- Playground and Sports Courts
- Parking
- i Information Bulletins

## LOCATION



# CURRENT CONDITIONS – UPPER AND LOWER DAMS

**60% Design**



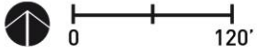
Please do your best to replicate true wetlands experience in upper pool area - currently attracts many bird species.

**LEGEND**

- 1 UPPER BRIDGE, FALL LINE TRAIL
- 2 LOWER BRIDGE
- 3 GATHERING SPACE
- 4 RIPARIAN HABITAT
- 5 STREAM STRUCTURE
- 6 RIFFLE CROSSING
- 7 EXISTING COVERED SEATING
- 8 EDUCATIONAL SIGN
- 9 EXISTING PARKING

- PROPOSED TREES
- EXISTING TREES
- COMPACTED EARTH TRAIL
- DECOMPOSED GRANITE TRAIL
- DISC GOLF BASKET

**MASTERPLAN**





## UPHAM BROOK AND FALL LINE TRAIL (UPPER) BRIDGE

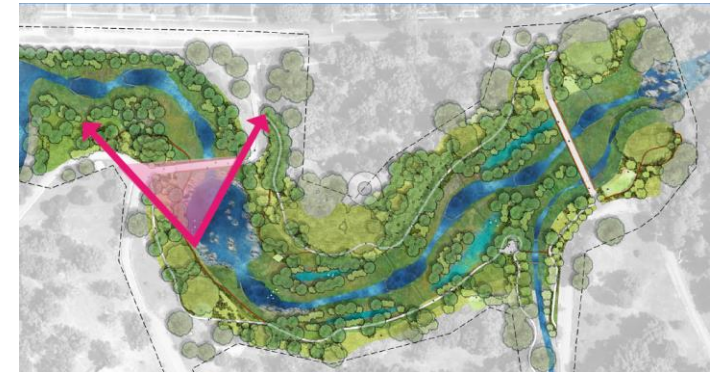
**Current**

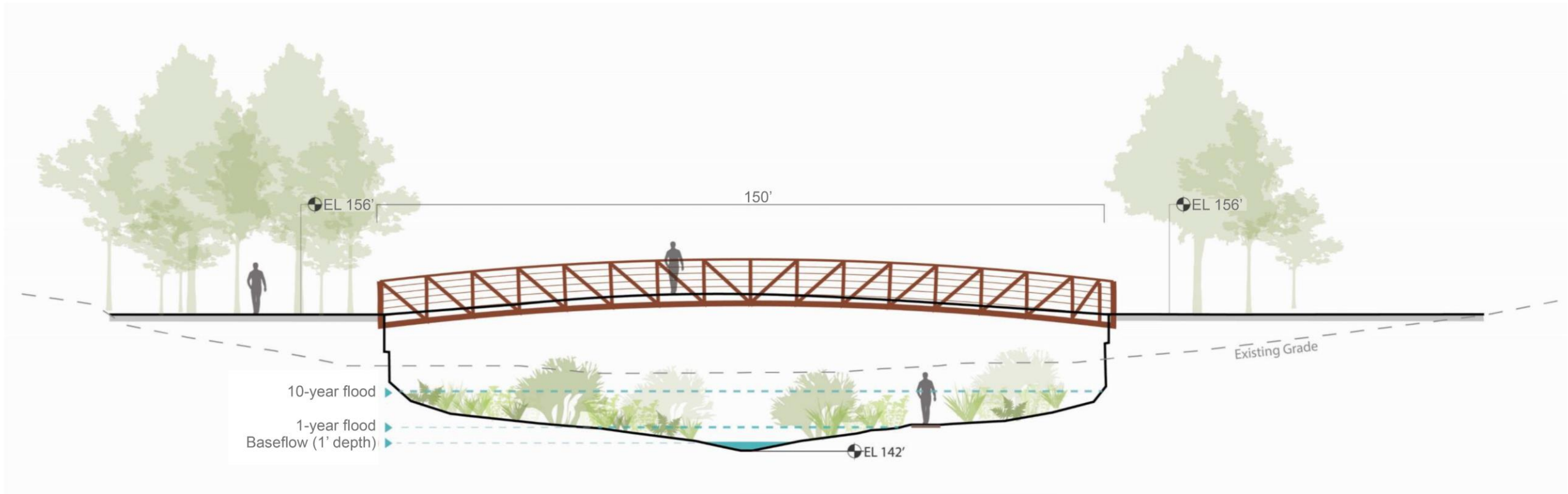


**Proposed**



## UPPER DAM REMOVAL

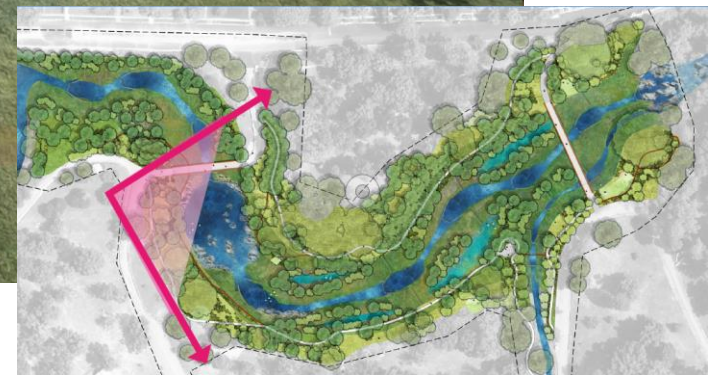




multi-use  
connector  
bridges for  
families biking  
and walking  
to the park



# FALL LINE TRAIL (UPPER) BRIDGE



## UPHAM BROOK POOL, LOWER REACH, AND LANDSCAPING



## UPHAM BROOK, PRINCETON CREEK, AND LOWER BRIDGE

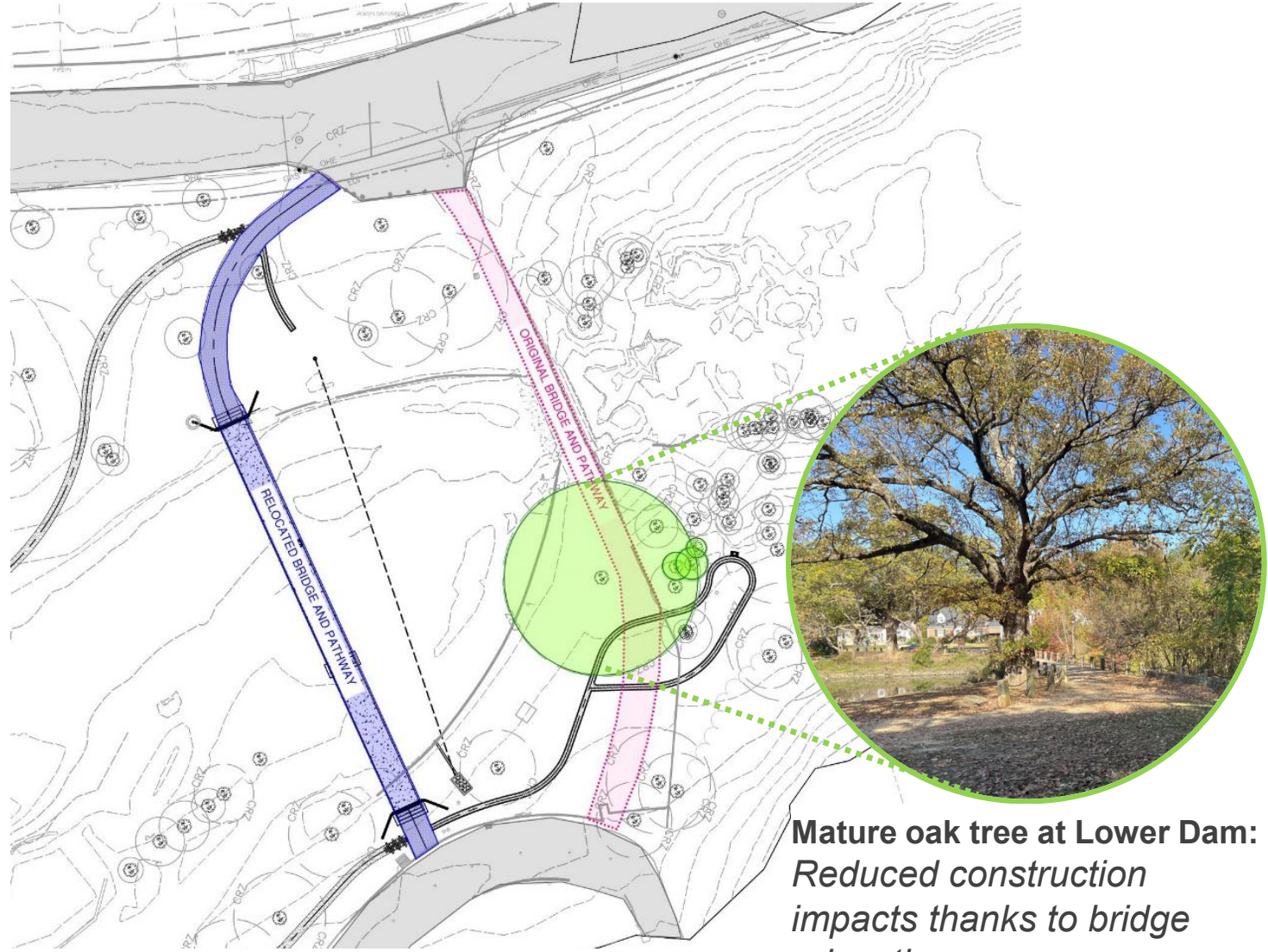
We heard your concerns regarding tree protection and adjusted the design accordingly

① protect Big oaks AT ENDS of Lower DAM  
② Re-use the retaining wall materials  
③ SIPA for large amounts of debris washing down during storm

The tree

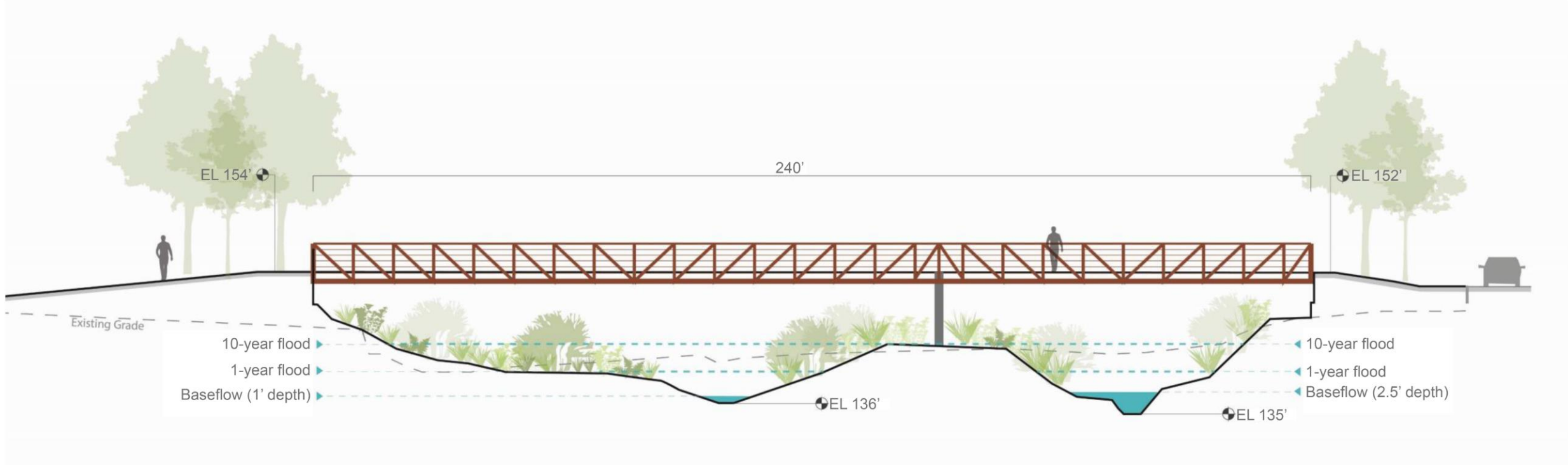
We have some old trees in the park. Please protect! Generally limit impact/tree removal

Please be particularly sensitive to fate of existing mature native trees - take decades to replace large, old tree.



Mature oak tree at Lower Dam: Reduced construction impacts thanks to bridge relocation

## LOWER BRIDGE RELOCATION FOR TREE PROTECTION



## LOWER BRIDGE



**Current**



**Proposed**





## **LOWER DAM REMOVAL AND DOWNSTREAM TIE-IN**

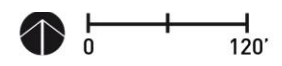


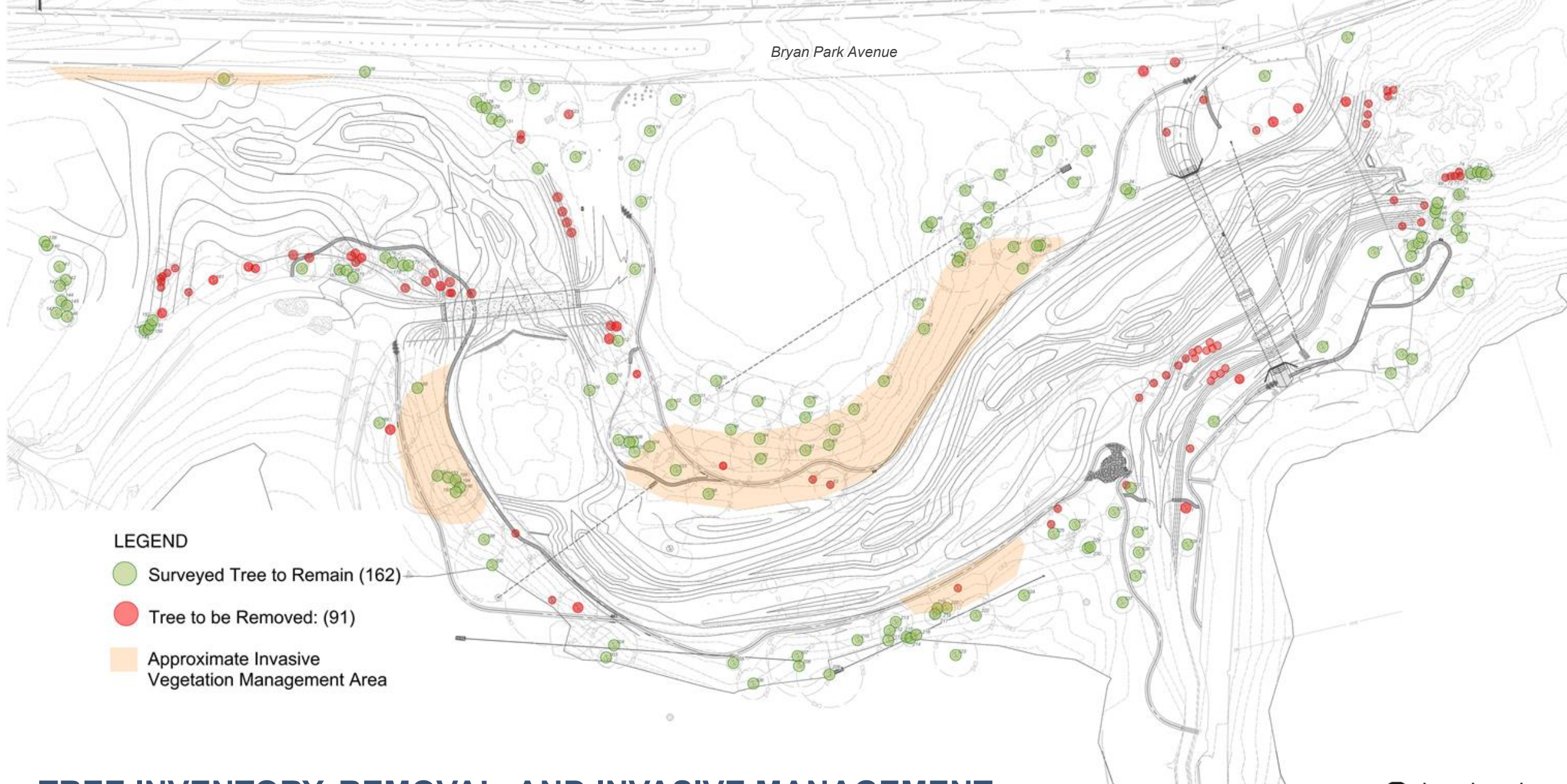


TREE INVENTORY KEY PLAN  
SCALE: 1" = 40'

-  CANOPY TREES (205)
-  UNDERSTORY TREES (245)




# 450 NEW TREES



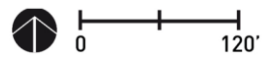


Bryan Park Avenue

**LEGEND**

-  Surveyed Tree to Remain (162)
-  Tree to be Removed: (91)
-  Approximate Invasive Vegetation Management Area

# TREE INVENTORY, REMOVAL, AND INVASIVE MANAGEMENT





*Ilex opaca*



*Amelanchier canadensis*



*Diospyros virginiana*



*Nyssa sylvatica*

BRYAN PARK AVE.

Please use Digital Atlas of the Virginia Flora as a guide in selection of native species to be planted in order to select only species native to this area.



*Celtis occidentalis*



*Platanus occidentalis*



*Betula nigra*



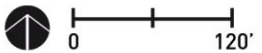
*Taxodium distichum*

JOSEPH BRYAN LN.

GABRIEL PROSSER CIR.

All selected species are native to Richmond

# PLANT PALETTE – 450 NEW TREES





*Lindera benzoin*



*Callicarpa americana*



*Morella cerifera*



*Viburnum dentatum*



*Corylus americana*



*Cephalanthus occidentalis*



*Aronia arbutifolia*

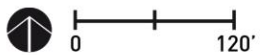


*Ilex verticillate*



**All selected species are native to Richmond**

## PLANT PALETTE – SHRUBS





OBSERVED ON SITE

*Andropogon ternarius*



OBSERVED ON SITE

*Asclepias incarnata*



*Schizachyrium scoparium*



*Chasmanthium latifolium*



*Sorghastrum nutans*

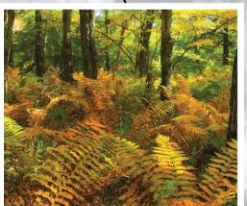


*Onoclea sensibilis*



OBSERVED ON SITE

*Pycnanthemum tenuifolium*

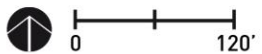


*Osmunda cinnamomeum*



**All selected species are native to Richmond**

## PLANT PALETTE – GROUNDCOVERS





*Callicarpa americana*



*Viburnum dentatum*



*Aronia arbutifolia*



*Cornus amomum*



*Eupatorium perfoliatum*



*Helenium flexuosum*



*Eragrostis spectabilis*

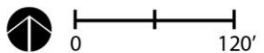


*Panicum virgatum*



**All selected species are native to Richmond**

## PLANT PALETTE – RIPARIAN EDGE





Ex. Disc Golf Basket



Ex. Disc Golf Course



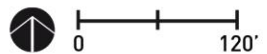
Compacted Earth Trail  
3'-0" wide



Decomposed Granite Trail  
5'-0" wide



## PATH NETWORK AND MATERIALS







PAVING PRECEDENT



EXISTING MATERIAL - COBBLESTONE SPILLWAYS



## GATHERING SPACE AND RECLAIMED MATERIALS



**SIGNAGE PRECEDENT**  
National Park Service  
Standard Vertical

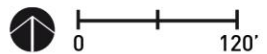


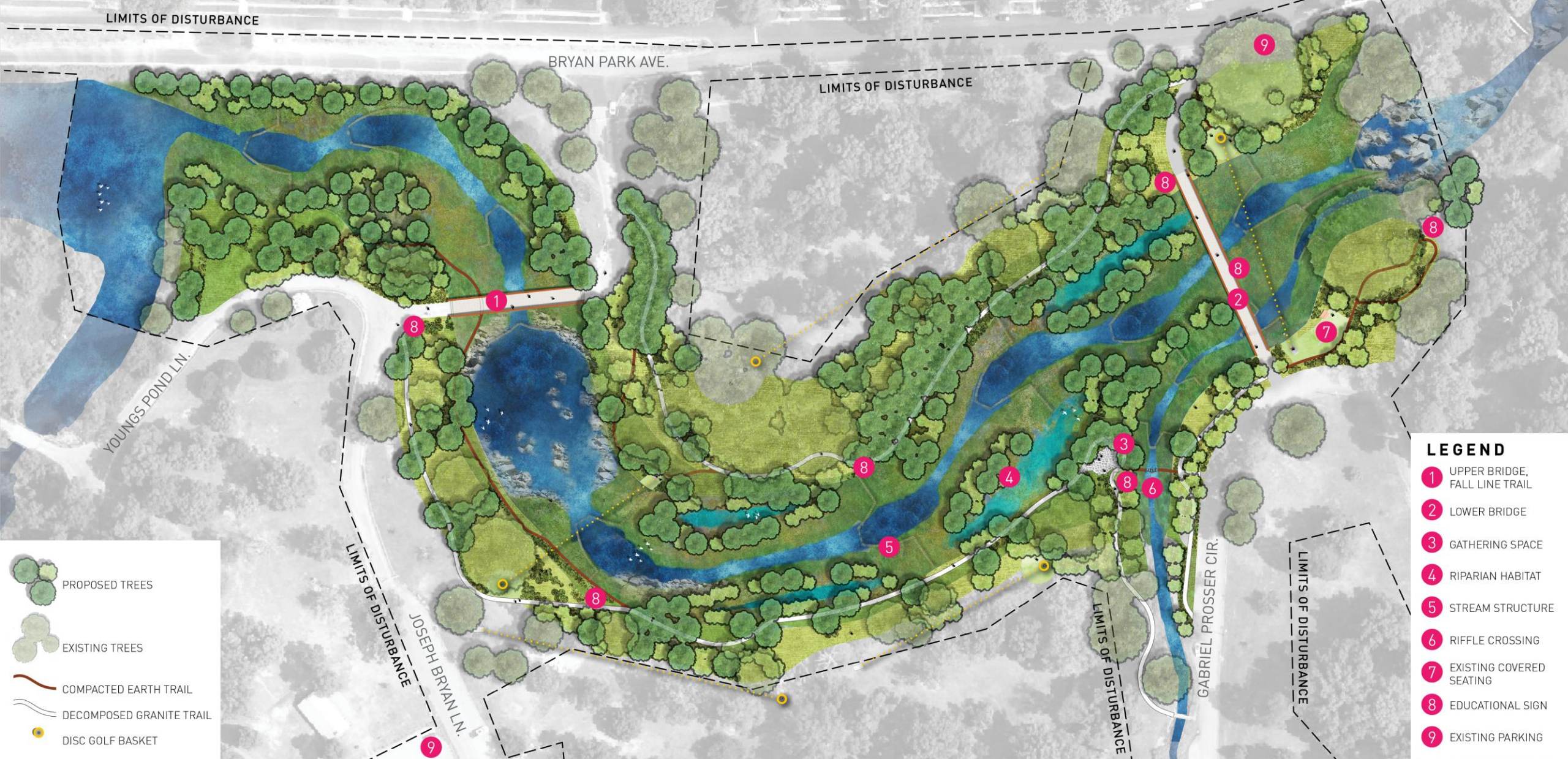
**SIGNAGE PRECEDENT**  
DOCK STREET PARK



Historical,  
interpretive  
signage to  
educate about  
Gabriel/  
Prosser

## POTENTIAL EDUCATIONAL SIGNAGE LOCATIONS





# MASTERPLAN

# Mitigating Impacts

## Limiting project impacts is top-of-mind in our design as we plan for construction

### Tree Protection

- Modifying the design to reduce impacts
- Implementing a robust Tree Protection Plan
- Focusing on native reforestation
  - Planting **450 new trees** as part of the project!

### Wildlife Protection

- Conducting a Rare, Threatened, and Endangered Species survey
- Timing construction to avoid critical breeding periods
- Installing measures to prevent wildlife entry into construction area
- Drawing down Young's Pond gradually
- Performing annual biological monitoring
  - before, during, and after construction

### Construction Impacts

- Movement through the park
- Hours of operation
- Construction noise
- Traffic and parking

## MITIGATING IMPACTS



### **Fish Passage**

Reconnecting over five miles of stream for fish passage



### **Invasive Vegetation Removal & Native Plantings**



### **Water Quality Improvements**

Dissolved oxygen and temperature benefits



### **Restoration of Aquatic and Riparian Habitat**

## **ECOLOGICAL BENEFITS**



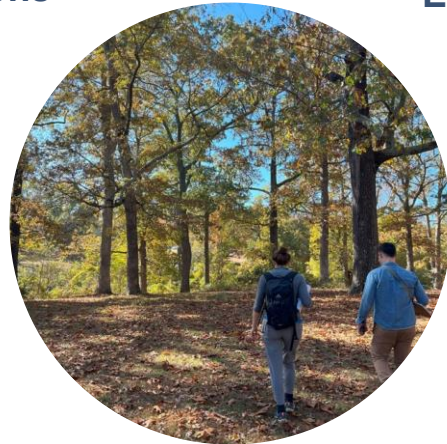
**Personal and Cultural Connections**



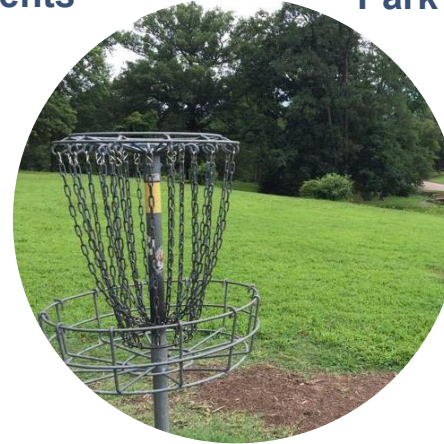
**Circulation and Accessibility Enhancements**



**Interpretation of Bryan Park's Layered History**



**Scenic and Recreational Value**



**Existing and Future Programming Support**

## **PARK USER BENEFITS**

# Community Involvement

## Where You've Encountered Us Recently:

- At our pop-up engagement sessions last summer in Bryan Park and at the RVA Big Market
  - We've been incorporating your feedback into the 60% design as you just saw. **Thank you so much for helping inform this project and staying involved!**
- Coordinating with the Friends of Bryan Park and the River City Disc Golf Club



## Where You Can Find Us Next:

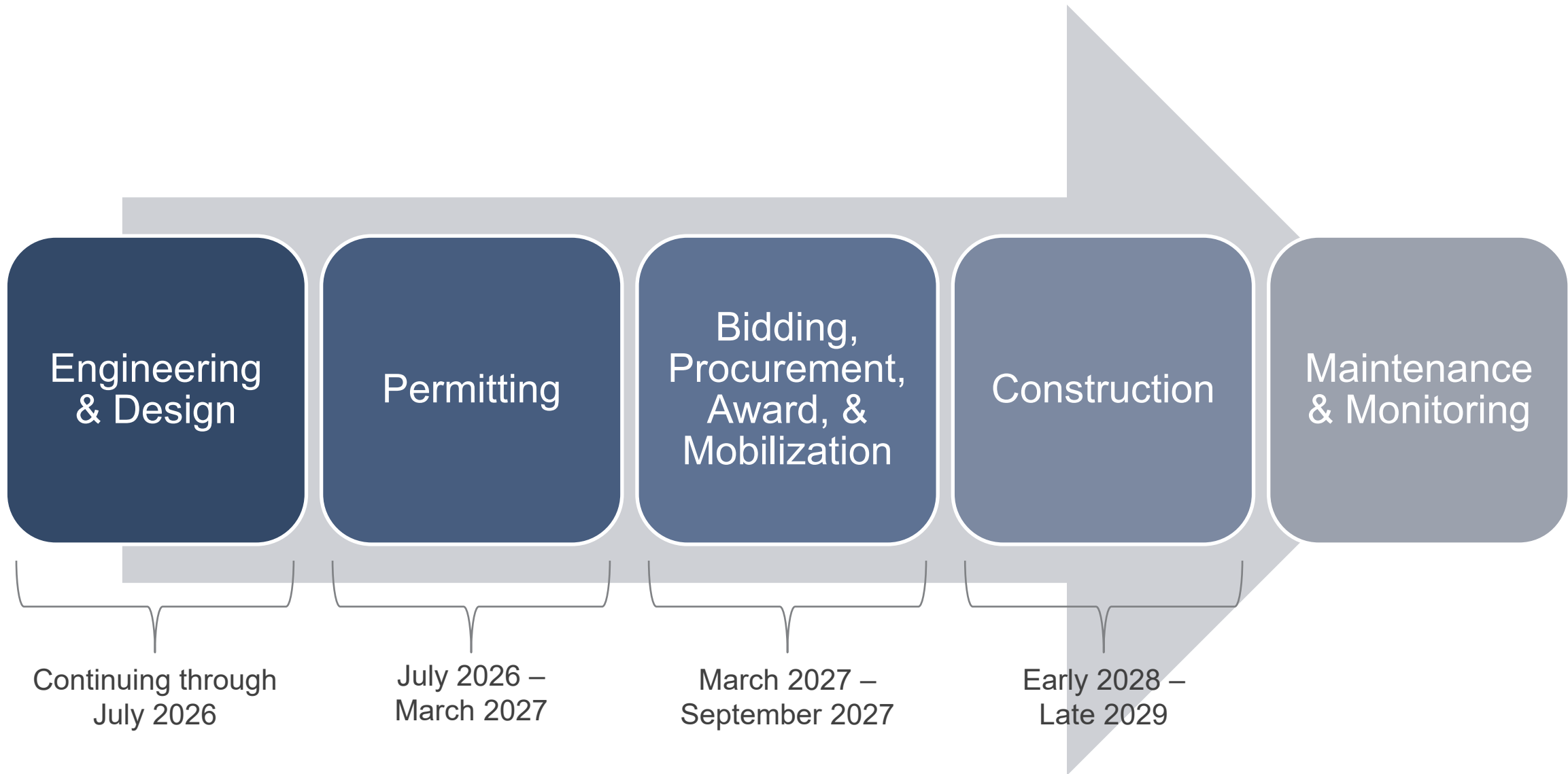
- At the City of Richmond's Urban Design Committee presenting this 60% Conceptual Design
- At [RVAH2O.org/bryan-park](https://RVAH2O.org/bryan-park), where our FAQs, flyer, and project information always stays up to date, and where you'll be able to find additional future engagement opportunities too
- Via our current online survey, which you can also find on [RVAH2O.org/bryan-park](https://RVAH2O.org/bryan-park) or by scanning this QR code
  - The survey will be available until Sunday, April 19th at 11:59 pm



## HOW WE'VE HEARD FROM YOU, AND HOW TO STAY INVOLVED

# Cost Estimate and Funding

# Timeline



## PROJECT TIMELINE

## Step outside to visit the Pine Camp Safety Project and Stream Rehabilitation

- Head towards Old Brook Road and look for the A-frame sign
- The sun doesn't set until 7:44!



Visit  
[RVAH2O.org/bryan-park](https://RVAH2O.org/bryan-park)  
anytime for up-to-date  
project information. Find the  
link to the **60% Design  
Survey** there or scan this  
QR code to fill it out



## THANK YOU FOR JOINING US!