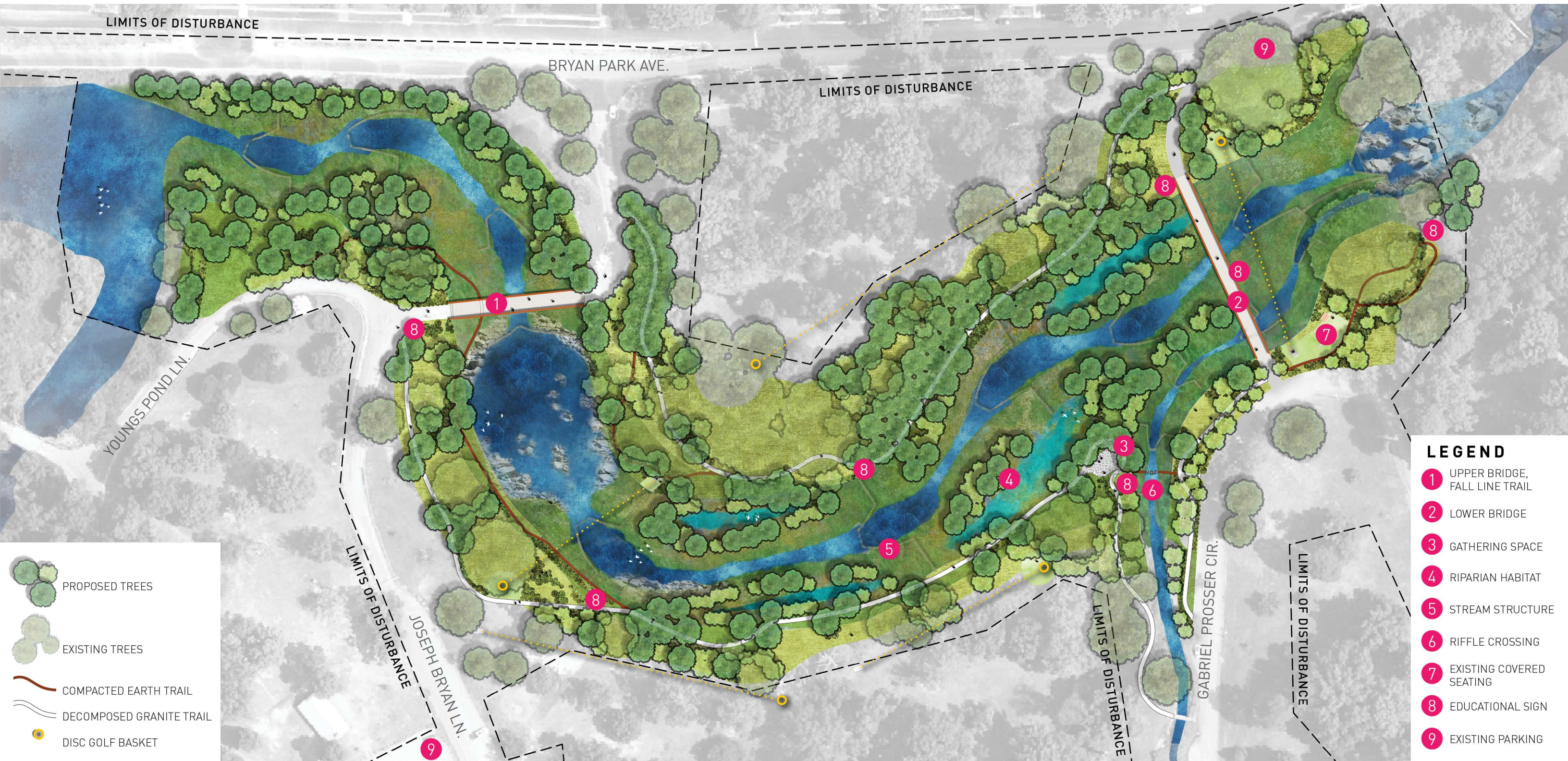


Bryan Park Dam Removals and Stream Restoration 60% Design





MASTERPLAN

Bryan Park Dam Removals and Stream Restoration



RENDERING - UPHAM BROOK UPPER REACH AND FALL LINE TRAIL BRIDGE

Bryan Park Dam Removals and Stream Restoration



City of Richmond | Hazen | Waterstreet Studio

Existing



Proposed

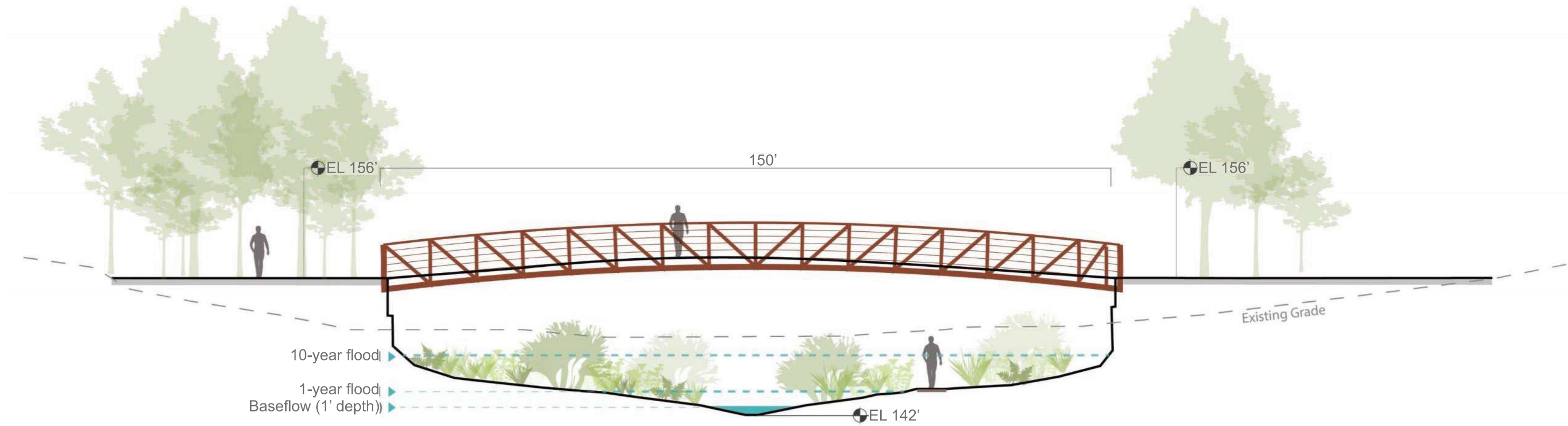


RENDERING - UPPER DAM REMOVAL

Bryan Park Dam Removals and Stream Restoration

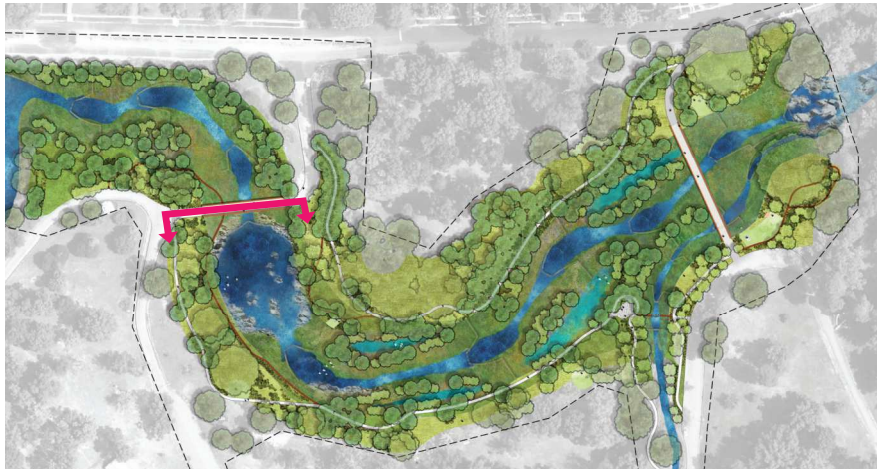


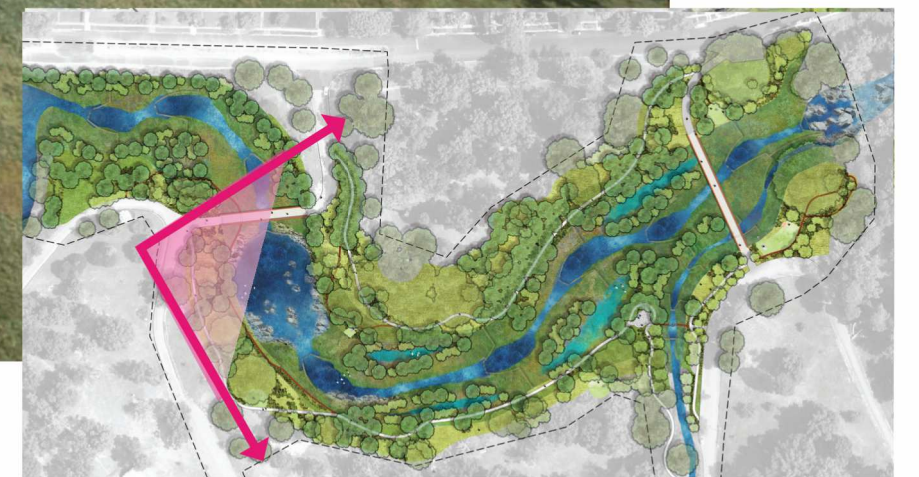
City of Richmond | Hazen | Waterstreet Studio



UPPER BRIDGE

Bryan Park Dam Removals and Stream Restoration





RENDERING - UPHAM BROOK POOL, LOWER REACH, AND LANDSCAPE DESIGN

Bryan Park Dam Removals and Stream Restoration

City of Richmond | Hazen | Waterstreet Studio

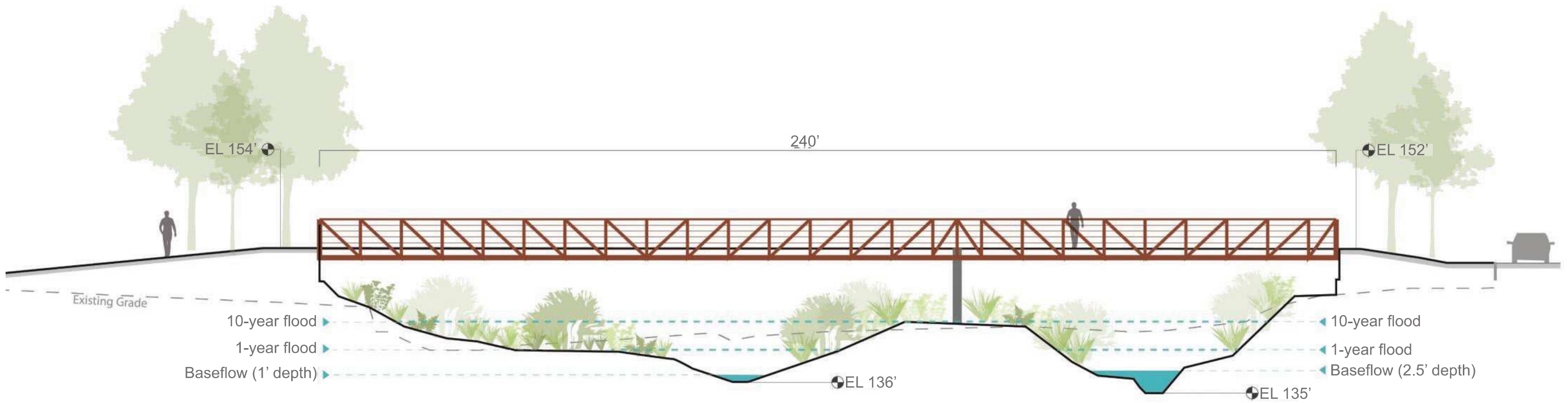


RENDERING - UPHAM BROOK LOWER REACH, PRINCETON CREEK, AND LOWER BRIDGE

Bryan Park Dam Removals and Stream Restoration



City of Richmond | Hazen | Waterstreet Studio



LOWER BRIDGE

Bryan Park Dam Removals and Stream Restoration



City of Richmond | Hazen | Waterstreet Studio

Existing



Proposed





RENDERING - LOWER DAM REMOVAL

Bryan Park Dam Removals and Stream Restoration



City of Richmond | Hazen | Waterstreet Studio



-  CANOPY TREES (205)
-  UNDERSTORY TREES (245)

All selected species are native to Richmond

PROPOSED TREES
450 new trees



Ilex opaca



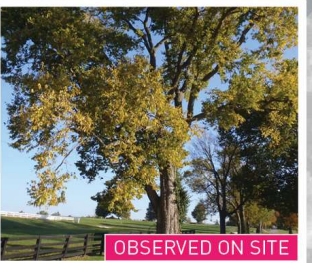
Amelanchier canadensis



Diospyros virginiana



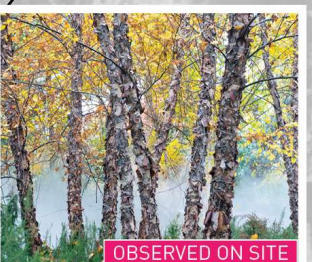
Nyssa sylvatica



Celtis occidentalis



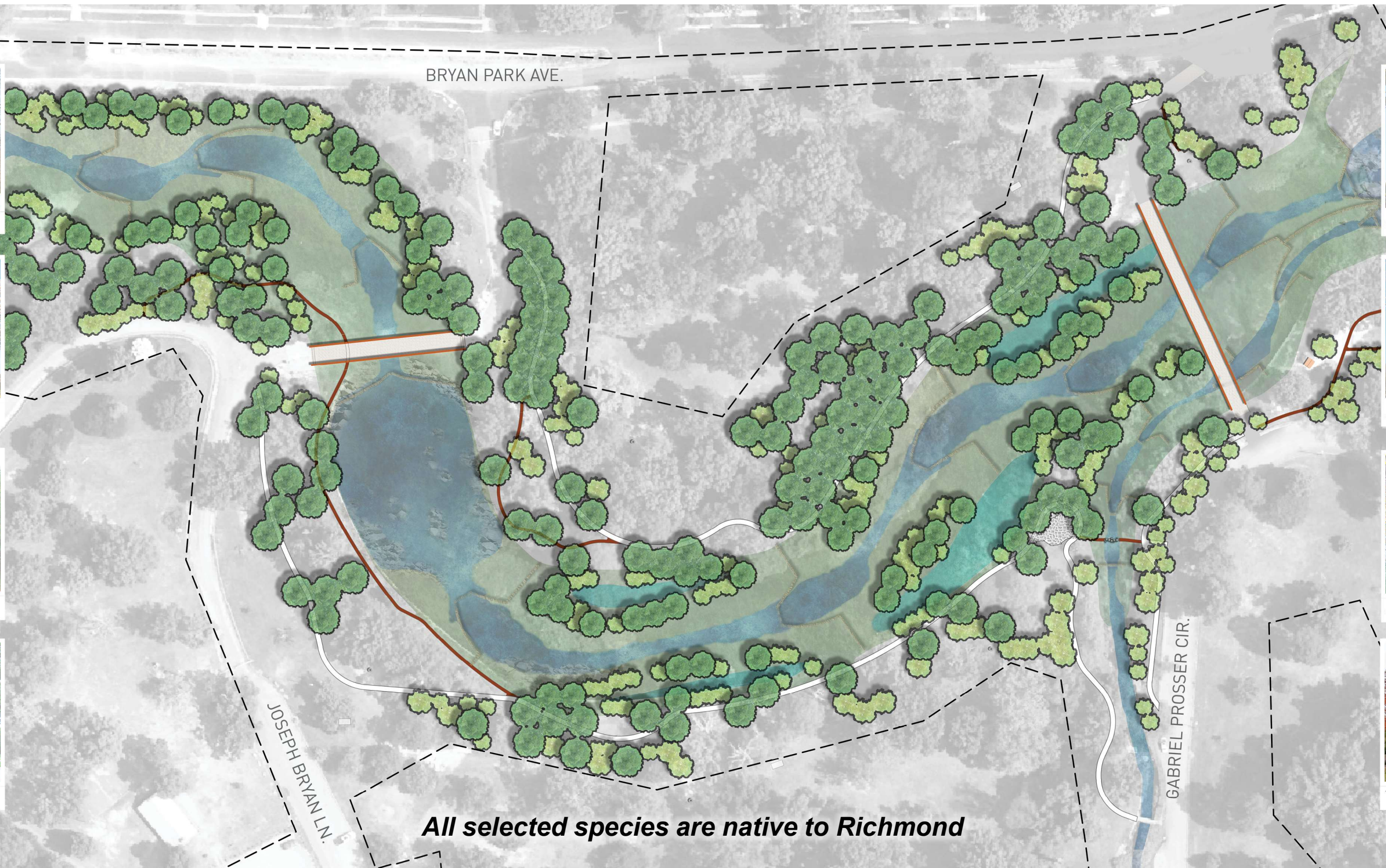
Platanus occidentalis



Betula nigra



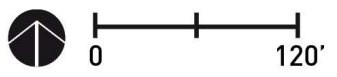
Taxodium distichum

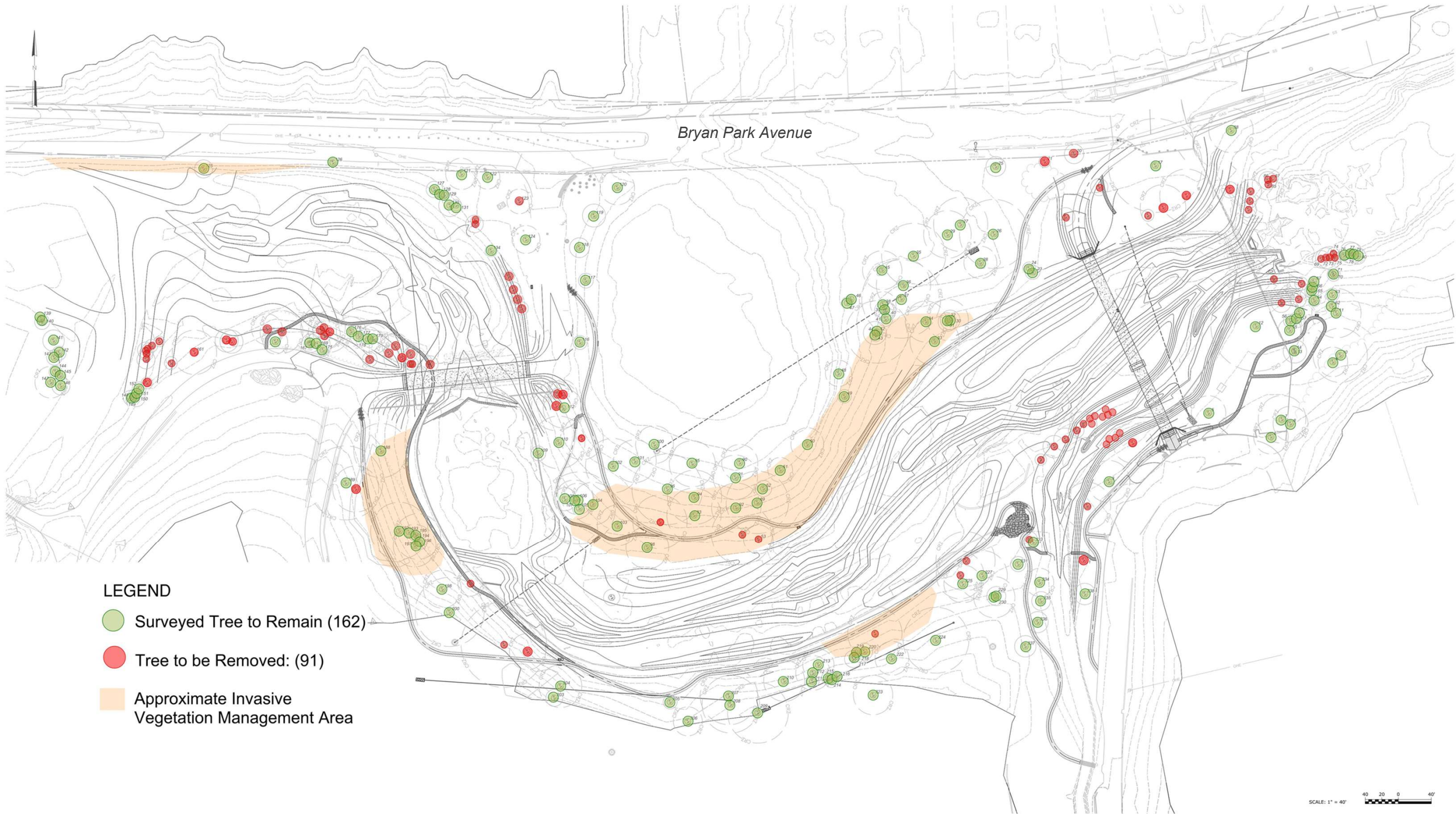


All selected species are native to Richmond

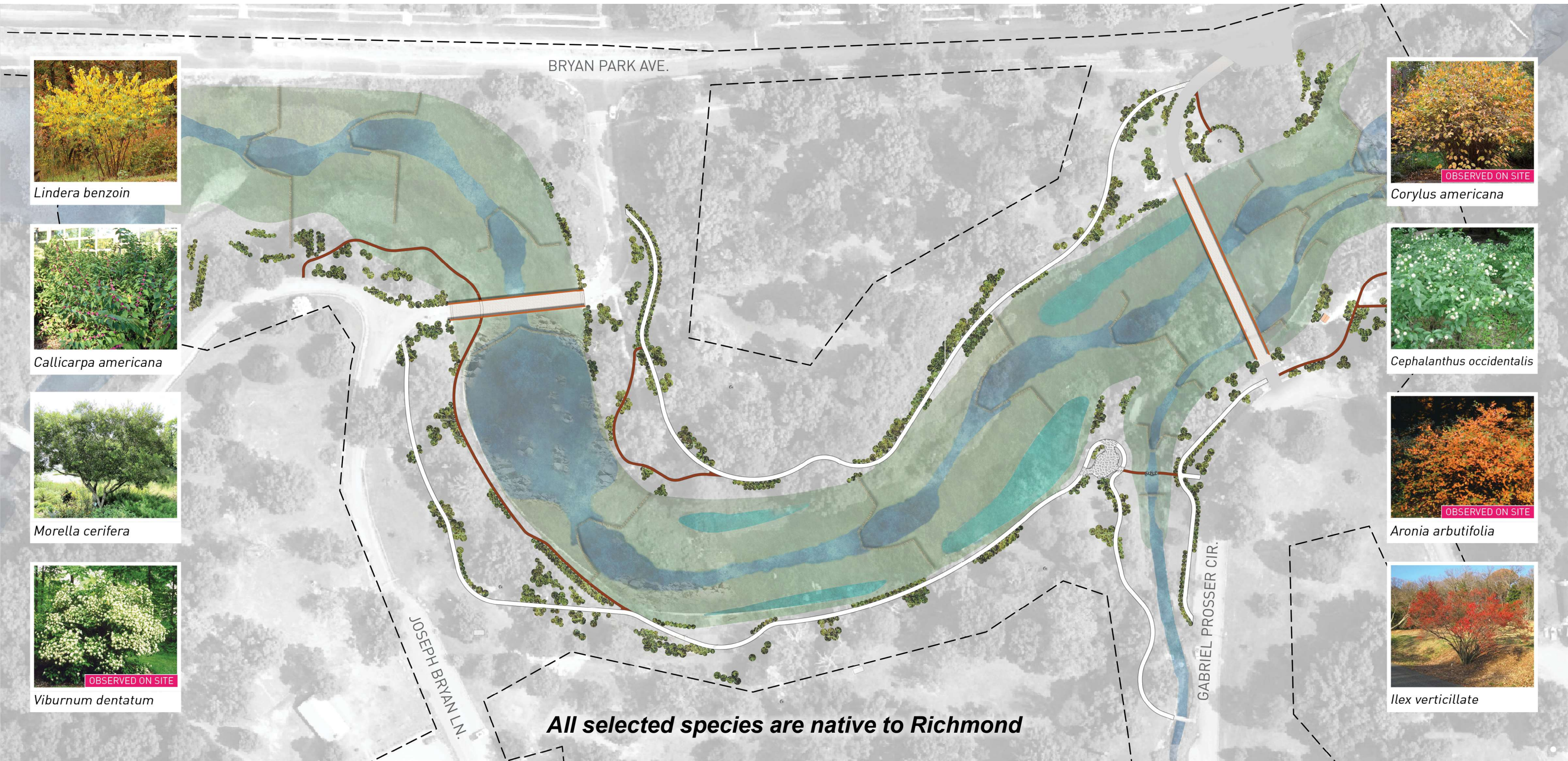
PROPOSED TREES

450 new trees



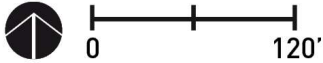


TREE INVENTORY, REMOVAL, AND INVASIVE MANAGEMENT



All selected species are native to Richmond

PLANT PALETTE – SHRUBS





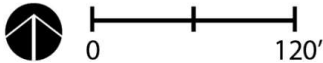
PLANT PALETTE – GROUNDCOVERS

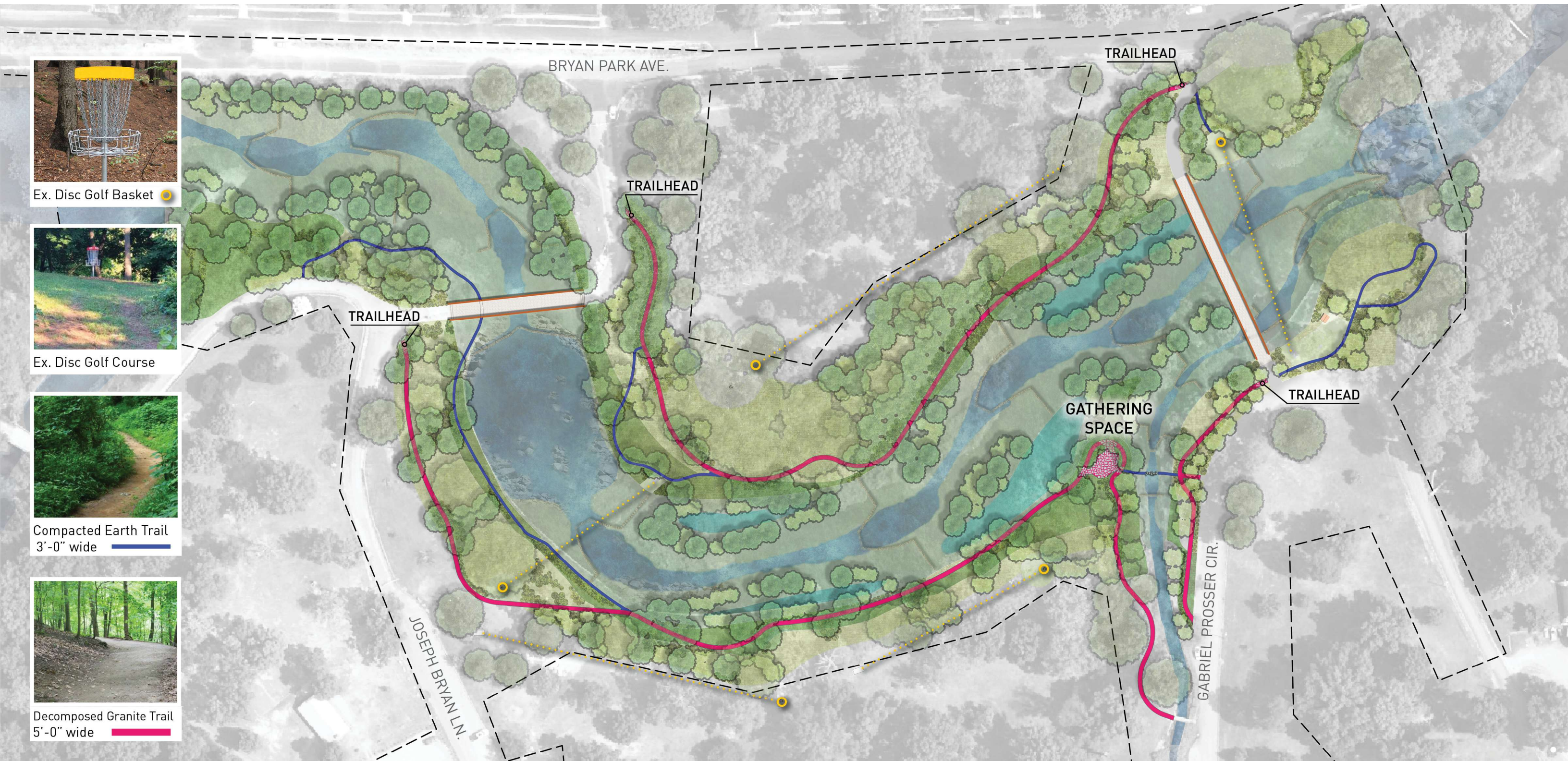




All selected species are native to Richmond

PLANT PALETTE – RIPARIAN EDGE

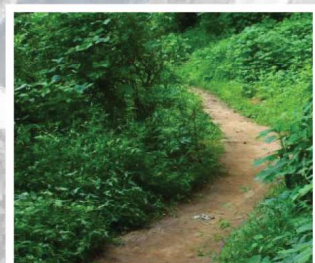




Ex. Disc Golf Basket



Ex. Disc Golf Course

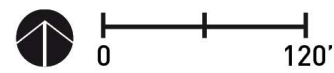


Compacted Earth Trail
3'-0" wide



Decomposed Granite Trail
5'-0" wide

PATHWAYS AND MATERIAL PALETTE





RECLAIMED MATERIALS AT GATHERING SPACE

Bryan Park Dam Removals and Stream Restoration



PAVING PRECEDENT



EXISTING MATERIAL - COBBLESTONE SPILLWAYS



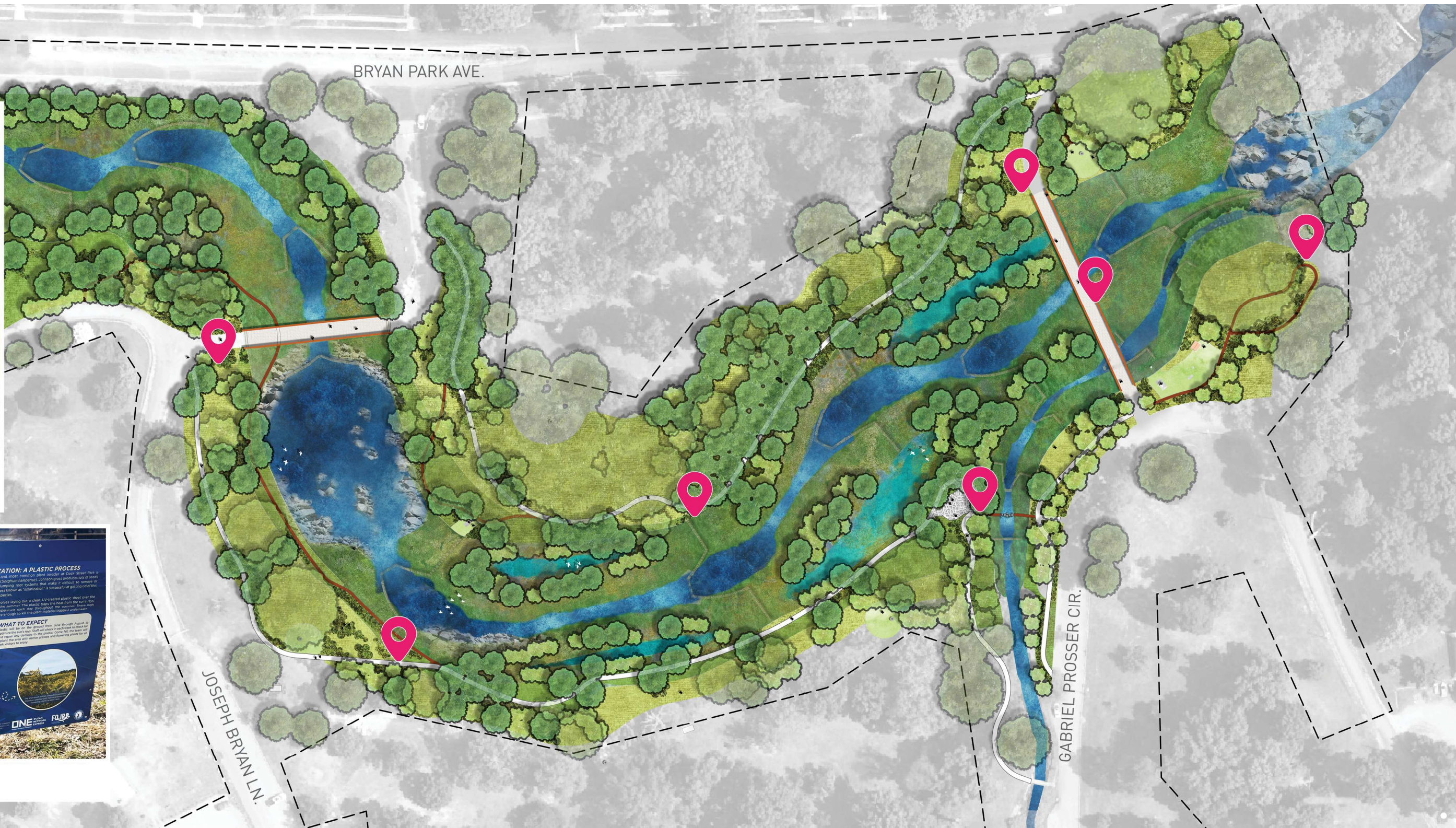
City of Richmond | Hazen | Waterstreet Studio



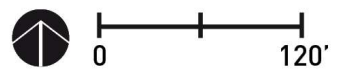
SIGNAGE PRECEDENT
National Park Service
Standard Vertical



SIGNAGE PRECEDENT
DOCK STREET PARK



POTENTIAL EDUCATIONAL SIGNAGE LOCATIONS



60% Design Public Meeting

Please join us to learn more about the project's design and next steps at our 60% Design Public Meeting

DATE: Tuesday, April 14th

TIME: 6:00 pm - 7:00 pm

LOCATION:
Pine Camp Cultural Arts and Community Center Auditorium

4901 Old Brook Road
Richmond, Virginia 23227

